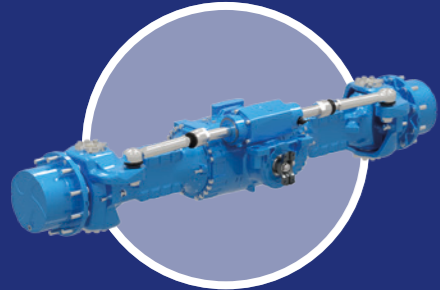


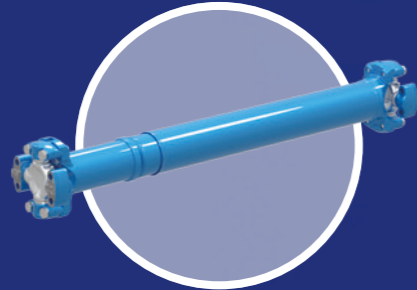
# Full-System Solutions for Telehandlers

Reliability, durability, and optimal cost of ownership are the common expectations from both rental fleets and individual machine purchasers in the construction market. Dana has the expertise, global reach, and system know-how to support the needs of construction telehandler manufacturers worldwide.



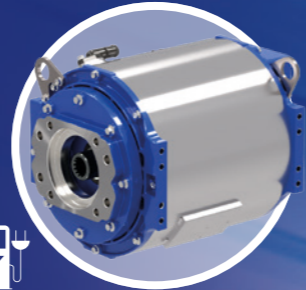
## Spicer® Planetary Steering Axles

- High driveline efficiency
- Reduce heat generation and minimize power loss



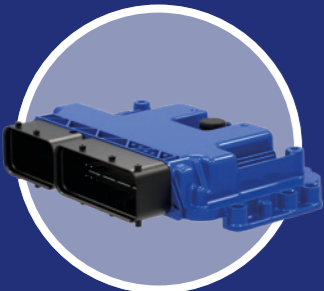
## Spicer® Driveshafts

- Ideal for the rigorous demands of most mobile off-highway applications
- Designed for minimal maintenance, longer life, and reduced operating costs



## TM4™ e-Pump Motor

- Effective performance and operation with a compact design
- SYR and IPM technology for high-efficiency
- Modular approach



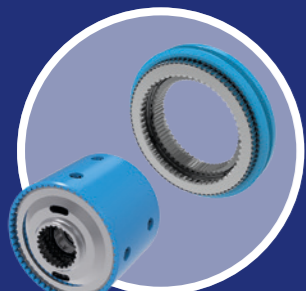
## Spicer® Electronic Controls

- Enables communication between driveline components
- Support for OEM advances in digitalization and automation
- Full library of Driveline Controls and Safety Functions



## TM4™ LVI430 Low Voltage Inverter

- Most power-dense inverter with patented in-house MOSFET multilayer power modules
- Open and fully flexible application software configuration



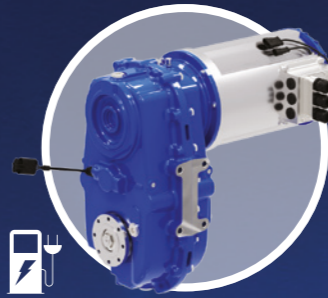
## Graziano® Shifting Solutions

- High-efficiency powershifts
- Enhanced shifting performance and driver comfort



## Spicer® eSG001

- High-efficiency single-speed
- Ideal for high-performance motors
- Compact and light



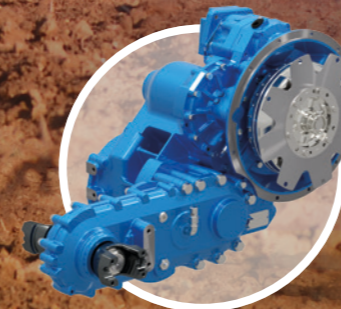
## Spicer® eSG101

- High-efficiency single-speed
- Ideal for high-performance motors
- Enhances vehicle mobility



## Spicer® eSG102

- High-efficiency, two speed
- Ideal for high-performance motors
- Enhances vehicle mobility



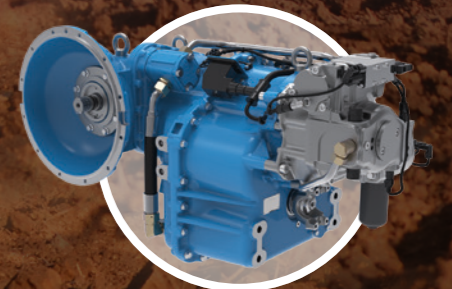
## Spicer® Hydrodynamic Transmissions

- Advanced electronic controls
- Highly-efficient aluminum-cast converter



## Spicer® Hydrostatic Transmissions

- Allows forward, reverse, and braking with hydrostatic motor
- Delivers high torque at low speeds



## Spicer® HVT

- Maximizes fuel savings
- Precise low-speed maneuvering control
- Increased travel speeds